



cruiseasia
by Destination Asia



THAILAND | VIETNAM | CHINA | JAPAN | HONG KONG | INDONESIA | SINGAPORE | CAMBODIA | MALAYSIA | MYANMAR | LAOS



Welcome

Cruise Asia by Destination Asia is Asia's leading shoreside and excursion management specialist, providing more cruise line services than any other company on the continent. The creative drive of our management and staff guarantees our clients receive the absolute pinnacle of personalized service and product delivery. Operating throughout our 11 country network, we provide key services in each destination, ensuring every possible outcome has been taken into consideration so the end result is fluid and void of unnecessary complication. Our key services include; Shore Excursions; Turnarounds; Meet and Greet Services; Group and Private Transfers; Luggage Handling; Port Agency Services; Itinerary Development; Port Consulting; Hotel Bookings; Air/Sea Packages; Pre/Post Tour Packages and Multi-Country Overland Tour Packages.



Exceptional
shoreside
services and
excursions
across Asia





Welcome	02	Cambodia	30
Contents	04	Malaysia	32
History of Cruise Asia	05	Myanmar	36
Our Asia Network	06	Laos	38
Why work with Cruise Asia?	08	Sustainability	40
Our Shore Excursions	10	On Top of Trends	42
Thailand	12	Contact	44
Vietnam	14		
China	16		
Japan	18		
Hong Kong	22		
Indonesia	24		
Singapore	28		

“Cruise Asia by Destination Asia is Asia’s leading shoreside and excursion management specialist, providing more cruise line services than any other company on the continent.”



Alvin Materi
Regional Director, Cruise Asia

Welcome to our Cruise Asia by Destination Asia corporate profile, created to give you a better understanding of exactly how we can support your business requirements. We have detailed our distinguishing key services that set us apart from our competitors, and introduce the in-country management teams from each of our 11 destinations who are ready to assist you.

On behalf of our cruise line clients, we have prepared multiple port studies, including pier suitability and ISPS code compliance, as well as customs and immigration preparedness, which are all important factors in itinerary development and the port selection process. Our multilingual staff are also on hand to manage your logistical challenges, ensuring you don’t have to worry about these critical details.

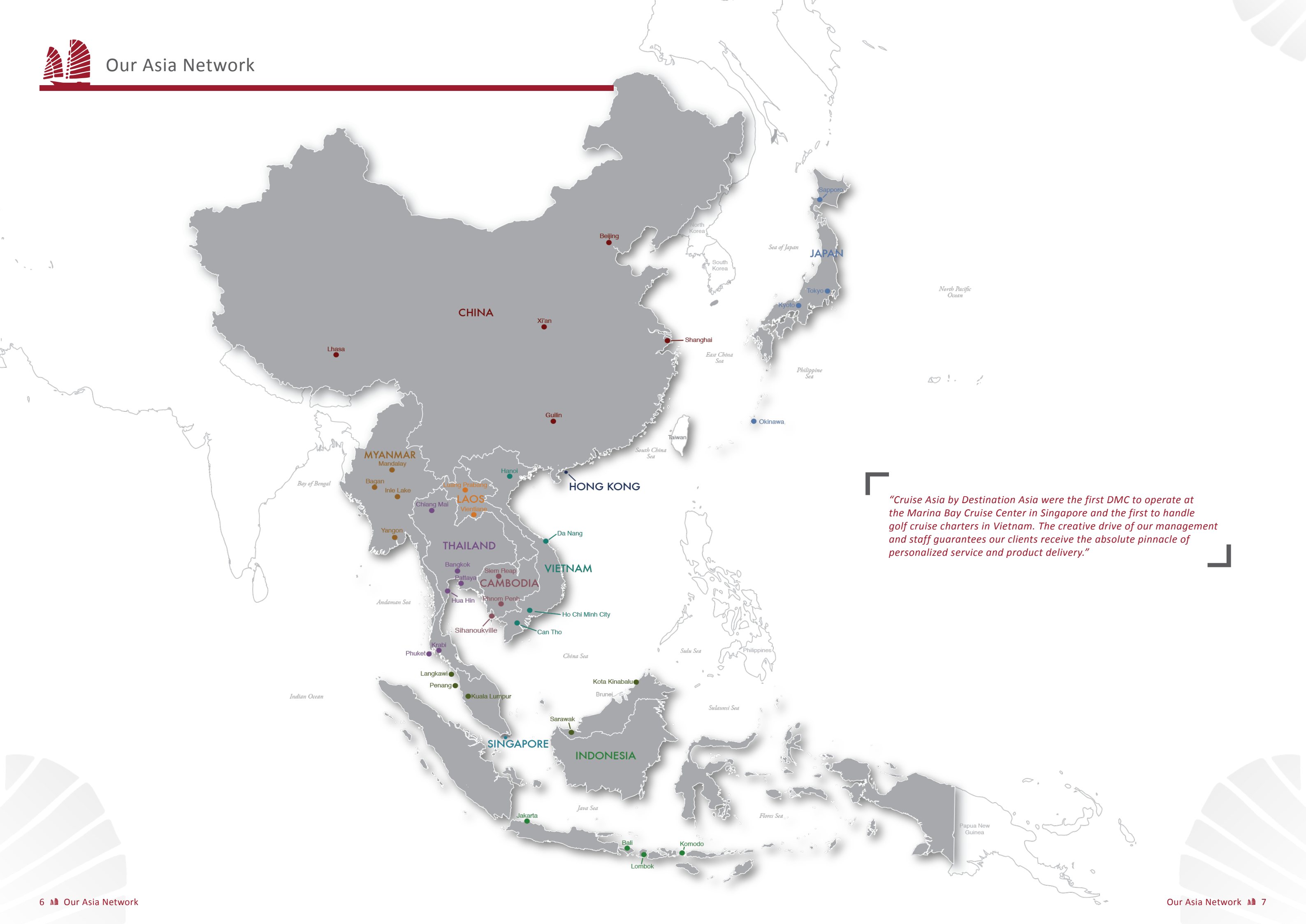
We are at the forefront of leading seamless turnarounds which form an essential element of any guest experience, providing individual training to each staff member. We also provide airport pick-ups, luggage handling, comfortable transfers in our fleet of modern vehicles, check-in and disembarkation point services.

History of Cruise Asia

A cruise pioneer in Asia, Cruise Asia by Destination Asia first worked with and advised major international cruise lines and expedition vessels way back in 1996, when the very first ship deployments were being planned. We were the first shoreside and excursion management company to specialize in Indochina operations, initially commencing operations in Thailand and Vietnam. Following on from their success, Cruise Asia by Destination Asia evolved with offices opening in China, Japan, Hong Kong, Cambodia, Indonesia, Myanmar, Singapore, Malaysia and Laos, further strengthening our association within the region.

With over 20 years of operations, our parent company Destination Asia is one of the most experienced destination management companies in Asia, with over 600 full-time staff employed in 31 owner-operated offices across Asia. Many of our team members have been with us since our inception and grown in sync with our company’s values and vision, placing us in a commanding position to excel at what we do – provide exceptional shoreside services and excursions across Asia.





“Cruise Asia by Destination Asia were the first DMC to operate at the Marina Bay Cruise Center in Singapore and the first to handle golf cruise charters in Vietnam. The creative drive of our management and staff guarantees our clients receive the absolute pinnacle of personalized service and product delivery.”



Why work with Cruise Asia by Destination Asia?



Exceptional Shore Excursions

We understand that the “one size fits all” approach cannot be applied to the cruise sector, so we have created a diverse range of shore excursions to suit every need and demographic, whether interests lie in cultural exploration, cuisine, experiential, niche or private touring options. With a specialist Cruise Asia Manager present at each port in which we operate, we guarantee seamless delivery and peace of mind for you and your guests.

We offer an unparalleled service for our clients, providing key services that include:

- ▮ International management expertise and home-grown staff equipped with invaluable local knowledge and contacts.
- ▮ No third party or liaison with additional suppliers – all clients deal directly with our professional teams who oversee the control of operations and shore excursions from initial contact to final product delivery.
- ▮ Back-to-back provision for overland programs that disembark from one port and return to another; internal airport services; ‘meet and greet’; visa on arrival; portage; and pre-check that are individually designed to meet the demands of differing destinations.

Professional Turnarounds

Turnarounds are a critical part of any guest cruise experience and this is why we individually train and select our multilingual staff, so they can handle the logistical challenges of a turnaround as consummate professionals. This begins with airport pick-ups, luggage handling and smooth transfers, right up to check-in and disembarkation point services.

Our teams work meticulously with cruise line staff to prepare and deliver turnarounds that are customized to each cruise line’s unique specifications and the differing characteristics of each port. Our vast experience enables us to deal with unexpected situations, while our continent-wide network provides inter-country support for different challenges such as multiple-ship movements over consecutive days.

Our services include:

- ▮ Airport meet and greet;
- ▮ Local transfers;
- ▮ Portage;
- ▮ Customs and immigration assistance;
- ▮ Luggage handling;
- ▮ Check-in point services;
- ▮ Terminal and pierside management;
- ▮ Pre/Post packages



Safety Management System

Cruise Asia by Destination Asia employs a systematic approach to managing safety, including the necessary organizational structures, accountabilities, policies and procedures as necessary for each country of operation.

Our safety management system is woven into the fabric of every operation, becoming an integral part of the way we complete each task, therefore reducing risk to a level that is as low as is reasonably practicable.



Cruise Asia Exclusive Events

We offer one-of-a-kind experiences in Asia, sharing in our clients’ passion for new discoveries, crafting exclusive events that enlighten, excite and leave long-lasting memories. Our tailor-made events reveal the inherent cultural qualities of a destination, connecting guests on a deep and meaningful level with the country they are in. We create extraordinary encounters that are exclusive to Cruise Asia by Destination Asia, forged by our cruise specialists and event departments who have extensive knowledge of the region.

The in-house team at Cruise Asia Destination Asia offers a distinct advantage to our clients as we have superior local product knowledge, long-standing relationships with many suppliers and we always assign a dedicated person to liaise with clients from the initial meeting to final product delivery.

Add an element of excitement to your next event:

- ▮ Amaze guests with a spectacular gala dinner served at the foot of the Great Wall of China.
- ▮ Explore the backstreets of Kyoto before dining with a Japanese geisha.
- ▮ Enjoy a guided tour of Singapore’s ‘Gardens by the Bay’, and a candlelit dinner atop one of its 50-meter high “Supertrees”.

Each of our country offices have a specialist event department to create bespoke, personalized experiences, immersing our clients in areas that are unavailable to most visitors. We enhance our events with an extra dimension, by coupling groups with world renowned experts or special guest speakers who can impart their expert knowledge.

Our Services Include

Port Agency Services

Our services are not limited to shore excursions and turnarounds. Through local partnerships we work closely with ships’ agents to facilitate efficient communications and seamless transition from sea to pier and vice versa. Our team of visa, immigration and customs liaison personnel provide the same exacting standards to your onboard team to ensure everything runs smoothly and efficiently behind the scenes, even before the very first guest has disembarked.

Itinerary Development

As pioneers in the Asian cruise industry, Cruise Asia by Destination Asia has worked with and advised major international cruise lines and expedition vessels since the very first ships were being deployed. Owing to our internal programs and career development plans, many of our team have been with the company since opening its doors, growing with us and helping to maintain a strong position even in times of adversity. We understand how seasons, weather patterns, tides and cabotage laws can unfavorably affect itinerary development. Our valuable experience, combined with our specialist knowledge, enables us to assess and deliver fast-track solutions to unscheduled circumstances.

Port Consulting

With over 22 international cruise lines serving Asia, operating a collective 43 ships (and growing), and year-round departures – there has never been more emphasis or demand for new and capable ports of call. Cruise Asia by Destination Asia is at the forefront of this endeavor, and on behalf of our cruise line clients, we have prepared multiple port studies: including pier suitability and ISPS code compliance, as well as customs and immigration preparedness. These are all important factors in itinerary development and the port selection process. We also conduct regular shore excursion program research in new ports to determine suitability for onshore activities that cater to both international and local source market preferences.



Our Shore Excursions



At Cruise Asia by Destination Asia we create experiences that mesmerize clients through the spiritual and natural wonders of Asia. These encounters are delivered through exemplary services and attention to the finest details.

Each experience connects with the local culture, heritage and people of the destination, providing direct insight into the natural and man-made wonders of the world's most enchanting continent. Here we highlight just a few of the countless possibilities available to you. Our extensive experience allows us to reveal lesser known destinations that your clients can visit to gain a deeper understanding of Asia.



Walking with the locals in Vietnam

For those passengers approaching Halong Bay in northern Vietnam, we have created a special encounter that immerses each person in the daily life of the local residents of Hanoi. After transferring to Hanoi from Halong Bay, we take guests on a 40 minute walk through the streets of Hanoi, concentrating on those areas that offer a window into its rich cultural past.

Our in-depth knowledge of the capital allows us to create this unique personal experience. The journey starts at Cua Nam Street and provides opportunities to

communicate with local residents while capturing moments of local life as we explore the famous and historic Long Bien Bridge, built at the beginning of the 20th century.

We immerse in the daily street life of Hanoians who live adjacent to the main railway line. Here we traverse the narrow streets of the old town, witnessing residents going about their daily chores of cooking, cleaning and raising their families as we walk alongside the tracks.



A colorful culture in Hong Kong

One of the best views of Hong Kong is from the top deck of the ship. At night the lights dance on the water's surface and the vibrancy of the city can be consumed from the comfort of the vessel.

Hong Kong is a fusion of East and West, a city of diversity where old and new meet face to face. We introduce guests to these ancient values with an early morning, hour-long lesson in tai chi. This takes place on the Tsim Sha Tsui waterfront, allowing practitioners to enjoy fantastic views across Victoria Harbour to Hong Kong Island. Once complete and in our new-found state of relaxation, we continue on to a tea house and learn about the intricate rituals involved in drinking it.

Next stop is the famous Lung King Heen 'View of the Dragon', which commands spectacular harbour views from its fourth-floor location, before winding down with an invigorating foot reflexology session.

Exceptional shoreside services and excursions across Asia



Walk the Dutch Trail in Malaysia

Walk back through time as you discover the great empires of Malacca the Malay Sultanate that includes a scenic cruise along the Malacca River. Along the way guests pass through downtown where old warehouses, shop houses, bridges and traditional Malay villages line the banks. Next we take a short walk from the jetty to Stadthuys and Christ Church for a brief photo stop. The Stadhuys is the most imposing relic of Dutch rule and features salmon red walls, heavy wooden doors and wrought-iron hinges. It now houses the Historical Museum. The adjacent Christ Church is a Dutch Reformed church constructed in 1753. From the Sultanate Palace, a replica of a 15th century palace that is now a cultural museum, we take a trishaw ride along the Street of Harmony and pass a number of fascinating temples before winding our way back to the pier.

Local Tales of Talad Noi in Thailand

Enjoy an off the beaten path experience in pulsating Bangkok. This excursion introduces the real Bangkokian lifestyle with a walk along the riverbank before winding down ancient lanes and past beautiful old churches that are hidden away from sight. Our tour is comprised of small backstreets and alleyways until we stumble upon local street art that adorns walls en-route to the river. You certainly won't be hungry on this tour as we sample plenty of Chinese and Thai food at the lively Talad Noi market. This market is one of the oldest and best preserved parts of Chinatown, stretching from Wat Trimit down all the way down to the river. Pop inside some of the old shophouses and peruse the mystical Chinese Buddhist shrines and temples. Last but not least we visit a Buddhist temple to attend a blessing performed by monks. The monks chant mantras and sprinkle holy water to bestow good luck while the guests present offerings in return.



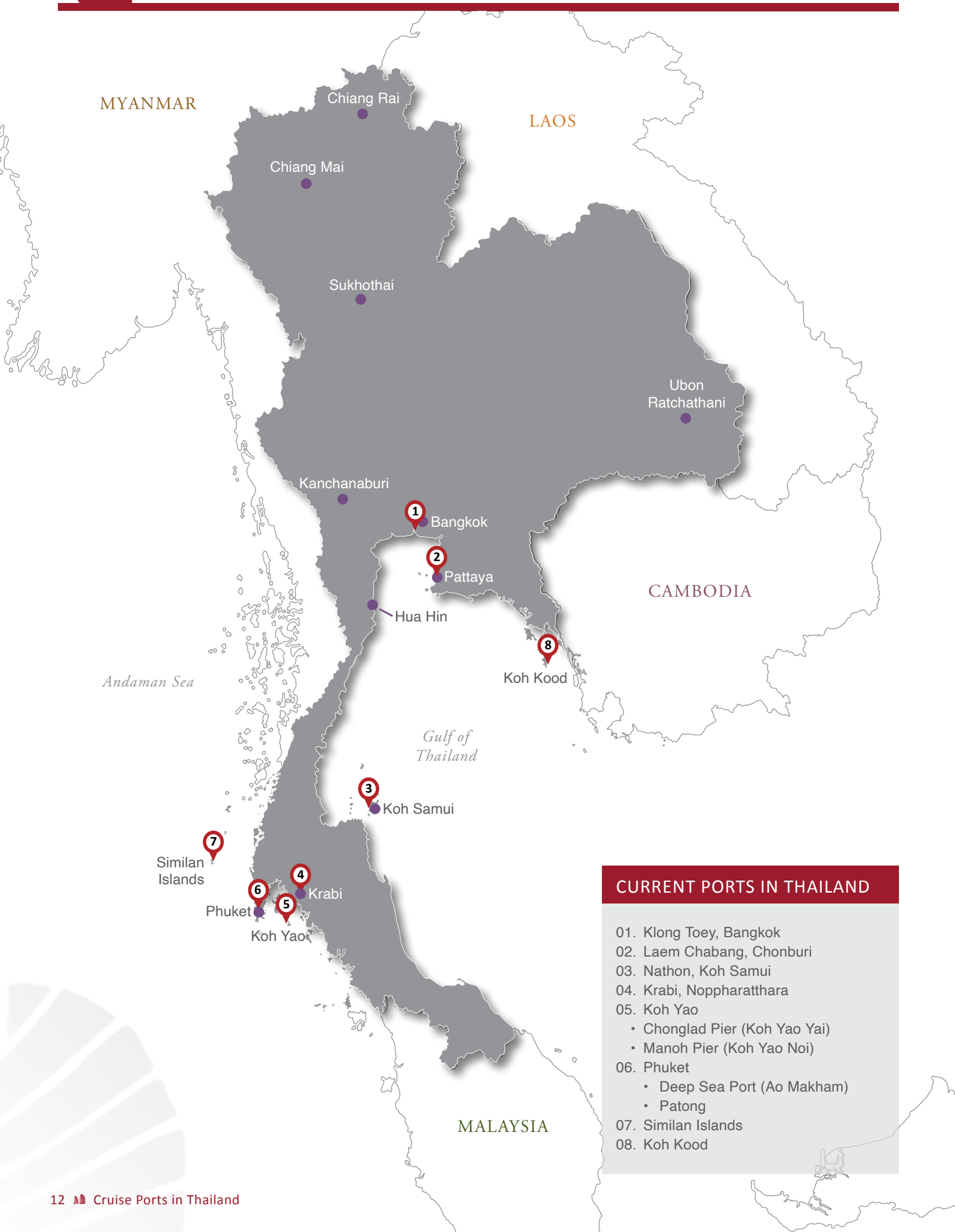
Off-Road Adventure in Indonesia

While exploring Indonesia and its 17,000 plus islands, there is one land adventure not to be missed. Mount Bromo is an active volcano and part of the Tengger Massif in East Java. At 7,641 feet, Bromo is not the highest peak in the range, but it is the best known of them all. Mount Bromo sits in the middle of a vast plain called the Sea of Sand - a protected nature reserve since 1919.

Guests can visit Mount Bromo just as the locals do, accessing the nearby mountain village of Cemoro Lawang before continuing in four-wheel-drive vehicle. Here we add to the sense of adventure with a pony ride (or walk if you prefer) to the rim of the crater. From the lip of the crater it is possible to witness the sea of ashen and volcanic sand, surrounded by the towering cliff of the crater's edge. The immense size of the crater and the supernatural beauty of the surrounding scenery are at times quite celestial.



Working With Wildlife: While cruising around the island of Borneo, there is one place that will truly benefit from a visit - the Sepilok Orang Utan Center (one of only five sanctuaries in the world). Here guests can discover the process of caring for orphaned and injured orangutan. We witness the feeding of orangutan in their natural habitat, a place where they are also taught survival instincts and to defend themselves. Guests can also travel to Labuk Bay Proboscis Sanctuary to see the endemic proboscis monkey before returning to their ship.



CURRENT PORTS IN THAILAND

01. Klong Toey, Bangkok
02. Laem Chabang, Chonburi
03. Nathon, Koh Samui
04. Krabi, Noppharattara
05. Koh Yao
 - Chonglad Pier (Koh Yao Yai)
 - Manoh Pier (Koh Yao Noi)
06. Phuket
 - Deep Sea Port (Ao Makham)
 - Patong
07. Similan Islands
08. Koh Kood

Thailand offers variety in abundance, with much of it easily accessible from its numerous ports. Phuket remains the largest cruise ship destination with pearly white beaches and a rugged jungle exterior on its doorstep, luring travelers from far and wide. The island is also a gateway to some of the world's best diving and snorkeling sites, set around a dramatic landscape of limestone karsts that rise from beneath the sea – presenting breathtaking views whilst approaching the island. Koh Samui in the Gulf of Thailand holds legendary status, known for its infectiously laid-back atmosphere, luxurious accommodation options and panoramic vistas of the surrounding seas.

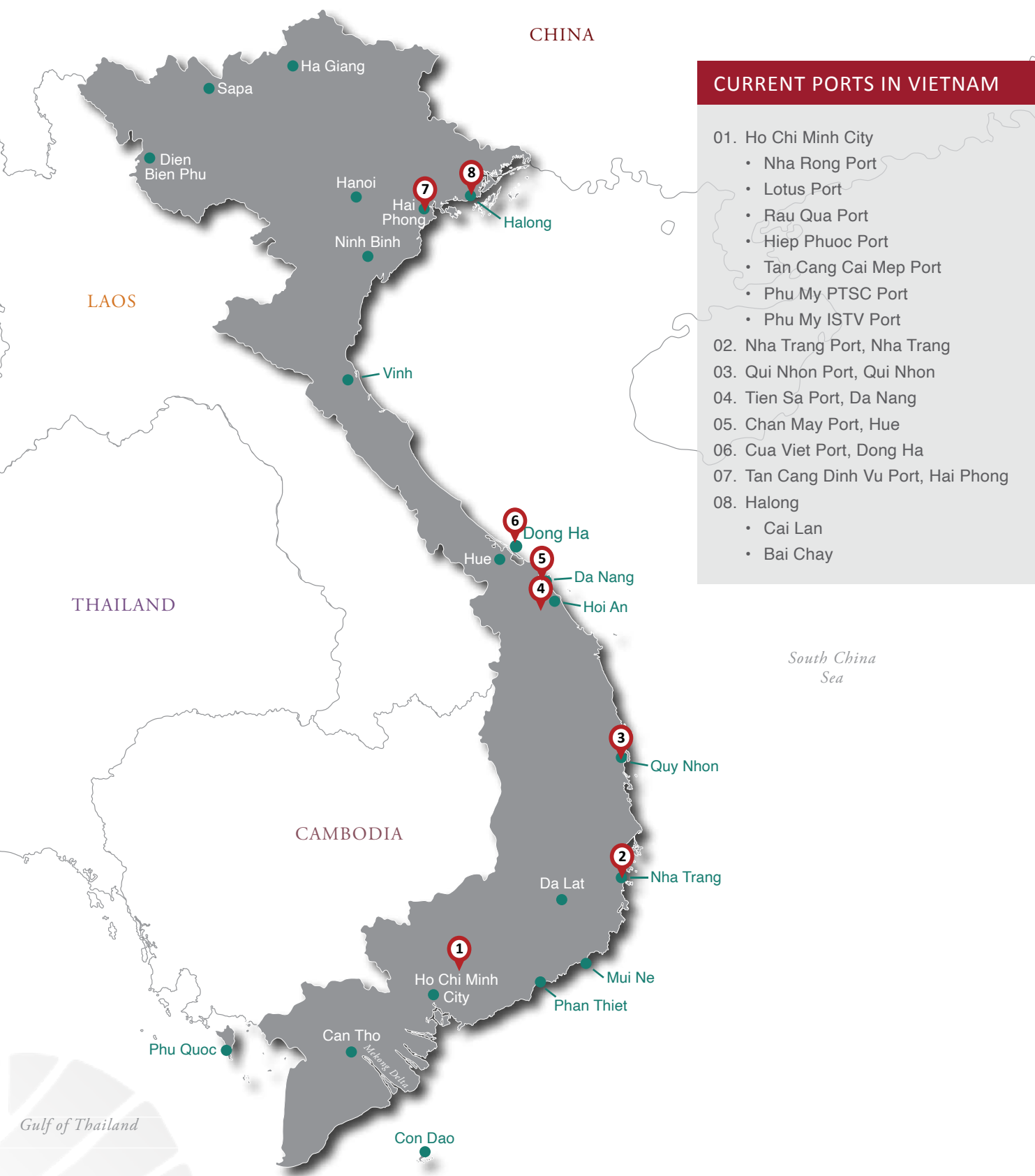
At the northernmost point of the Gulf of Thailand, Bangkok is easily accessible from the ports of Laem Chabang and Klong Toey, allowing excursions into the capital and beyond, introducing passengers to the colorful flavors of Thailand. We connect travelers with the gleaming temples, vibrant markets, fiery cuisine and the high-octane energy that filters through the streets of Bangkok. We connect travelers with gleaming temples, vibrant markets, fiery cuisine and the high-octane energy that filters through the streets of one of Asia's most pulsating capitals.



"Within an hour's flight from Bangkok, guests can touchdown in the rugged northern region, home to remote hilltribes, jungle treks and some of Asia's most stunning natural landscapes."



For more details on cruise options and turnarounds in Thailand, send your enquiry to alvin@cruise-asia.com



Vietnam is one of Asia's premier cruise destinations and wherever a ship docks in the country, you are never far from one of its iconic tourism hotspots. In the north visitors to Halong Bay are not only treated to an exploratory journey through thousands of islands in one of the world's most compelling seascapes, but are also just a few hours from the stunning capital of Hanoi. This resplendent city is undeniably charming, steeped in a fascinating history with period architecture lining the wide roads, intricate alleyways home to ancient shophouses and a medley of trades visible on its streets.

Along the coastline of central Vietnam lie a string of ports that provide easy access to the coastal towns of Hue, Da Nang and Hoi An. Further south Ho Chi Minh City is just a couple of hour's drive from Phu My, while smaller vessels can navigate the Saigon River, taking passengers directly into the heart of the city.



"Within easy reach from the city is the wide-reaching Mekong Delta, a water world where rice paddies stretch as far as the eye can see and even the houses are built to float."



For more details on cruise options and turnarounds in Vietnam, send your enquiry to alvin@cruise-asia.com



CURRENT PORTS IN CHINA

- | | |
|---|---|
| 01. Beijing (Tianjin) | 06. Zhoushan International Cruise Port, Zhoushan |
| • Tianjin International Cruise Port | 07. Xiamen International Cruise Terminal, Xiamen |
| • Tianjin Xingang Port Passenger Terminal | 08. Phoenix Island International Cruise Terminal, Sanya |
| 02. Dalian Harbour, Dalian | 09. Taizhou |
| 03. Port of Yantai, Yantai | 10. Haikou |
| 04. Qingdao Passenger Cruise Terminal, Qingdao | 11. Guangzhou |
| 05. Shanghai | |
| • Shanghai International Cruise Terminal (North Bund) | |
| • Wusongkou International Cruise Terminal (Baoshan) | |
| • Waigaoqiao International Cruise Terminal | |

China is home to some of the world's largest ports, with the pioneering city of Shanghai facing the East China Sea and served by an efficient turnaround port. While Shanghai is on the doorstep for disembarking passengers, Beijing is just 100 kilometers from the port of Tianjin, presenting visitors with fascinating excursion options that include standing in the presence of one of the world's most immense wonders, the Great Wall of China, visiting The Forbidden City and exploring the Temple of Heaven. Much can be achieved in an overnight visit to Beijing, owing to a super-efficient and extensive transport system that crosses the capital.

Visitors can marvel at the myriad attractions and ancient cultures which openly present themselves in Beijing. Visits to antique street markets, cooking classes and a lesson in Tai Chi in a temple are experiences few relate to Beijing, yet provide the best connection to its long and fascinating historic culture.



"Further south along China's extensive coastline, the ports of Xiamen and Sanya can be found. Sanya is located on the island of Hainan, an island province with a year-round tropical climate, inviting beachside hotels and a growing number of exceptional golf resorts."



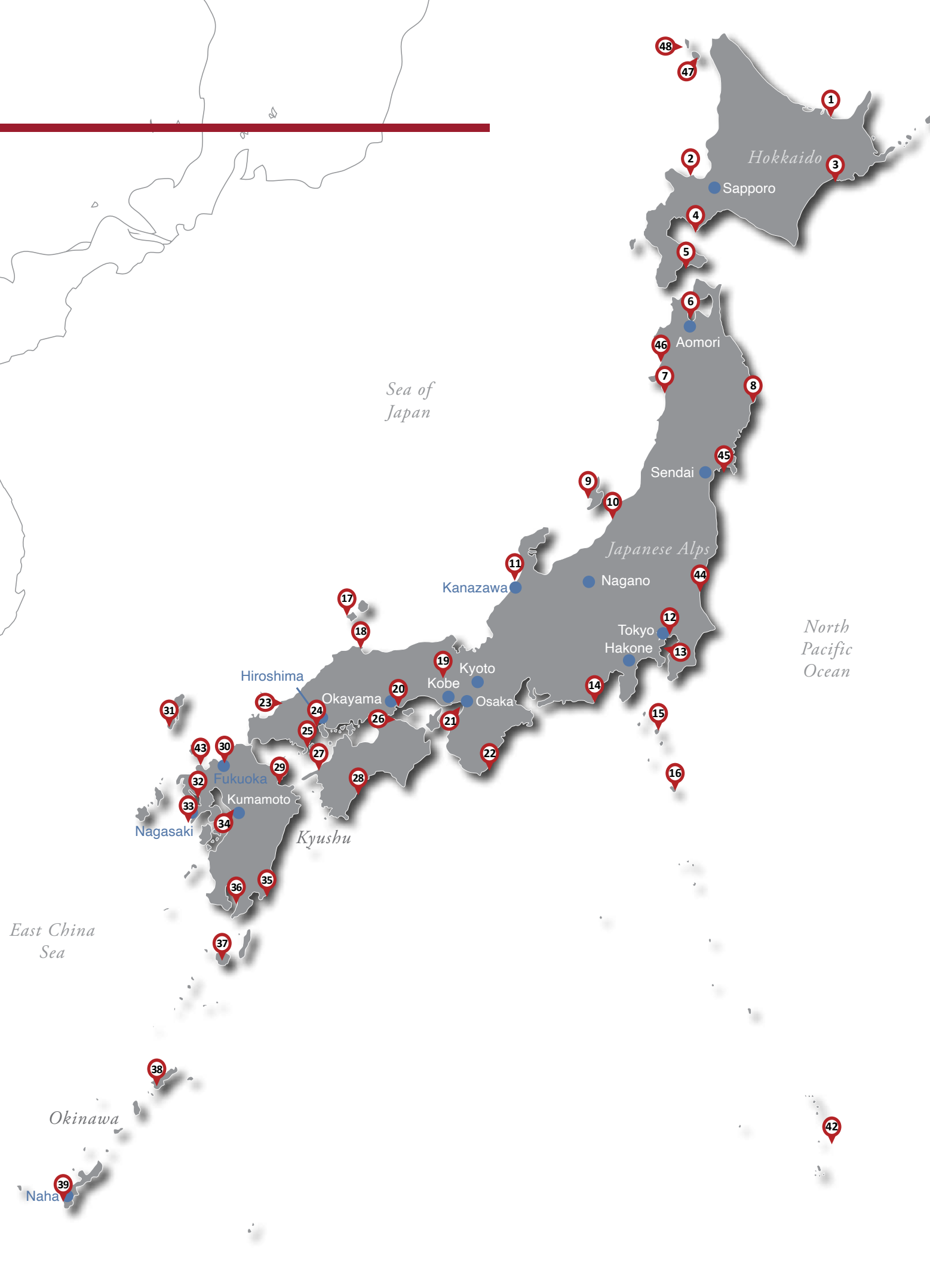
For more details on cruise options and turnarounds in China, send your enquiry to alvin@cruise-asia.com

CURRENT PORTS IN JAPAN

01. Abashiri, No.4 Pier
02. Otaru
 - Katsunai Pier
 - No.3 Pier
03. Kushiro, East Port
04. Muroran, Central Wharf
05. Hakodate
 - Minatocho Pier
 - West Pier
06. Aomori, Aomori Port
07. Akita, Nakajima No.2 Pier
08. Miyako, Miyako-Port
09. Sado Ogi Pier, Futami Pier
10. Niigata, Chuo Pier
11. Kanazawa, Muryoji Pier
12. Tokyo
 - Harumi Pier
 - Oi Container Port
13. Yokohama, Osanbashi Pier
14. Shimizu, Hinode Pier
15. Miyake-Jima (Anchor)
16. Hachijo-Jima
 - Sokodo Pier
 - Yaene Pier
17. Oki Island (Nishinoshima) Anchor
18. Matsue, Sakai Ko
19. Kobe
 - Naka Pier Cruise Terminal
 - Kobe Port Terminal (Shinko Pier #4)
20. Uno, Uno Port
21. Osaka, Tempozan Pier
22. Shingu, Shingu Port Miwasaki No.4
23. Hagi, Gata-ko Pier
24. Hiroshima, Hiroshima Cruise Dock
25. Miyajima

CURRENT PORTS IN JAPAN

26. Takamatsu, Sun Port
27. Uwajima, Sakashizu Pier
28. Kochi, Kochi Port
29. Beppu, Port of Beppu
30. Fukuoka, Hakata Pier
31. Tsushima, Izuhara Port
32. Sasebo, Sasebo Port
33. Nagasaki
 - Matsugae Pier
 - Dejima Pier
34. Kumamoto,
 - Kumamoto Port
 - Yatsushiro Port
35. Miyazaki, Aburatsu Port
36. Kagoshima, Marine Port
37. Yakushima, Miyaura
38. Amami Oshima, Naze Port
39. Naha, Cruise Terminal
40. Miyako Island, Hirara Port
41. Ishigaki Island, Ishigaki-ko
42. Chichi-Jima (Anchor)
43. Karatsu
44. Hitachinaka
 - Hitachinaka Port
 - Oarai Port
45. Sendai
 - Shiohama Port
 - Sendai Port
46. Noshiro port
47. Rishiri Island
48. Rebun Island



Japan is an old favorite amongst cruise aficionados, owing to its multiple ports and intriguing range of islands to dock at - each with their own distinct character. Opportunities to connect with an ancient culture and exchange pleasantries with the welcoming people of Japan are never far away. Tokyo's close proximity to the port of Yokohama allows guests to experience the unique cultural qualities of the capital, its spellbinding heritage and contrasting modernity.

The short distances from each port to this island nation's most renowned attractions allows guests to take advantage of a spectacular array of tour programs. Whether visiting Tokyo, Kyoto, Osaka, Fukuoka, Hiroshima or Miyajima from a nearby sea port, the opportunity for an exceptional travel experience is always close-at-hand.



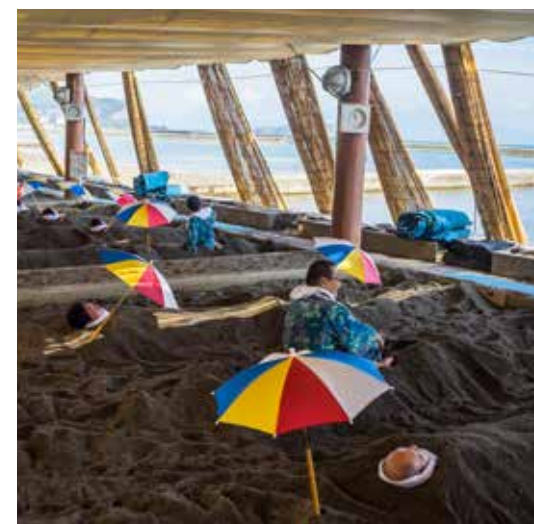
"Kyoto is the nation's former capital and a city of deeply philosophical cultural traits, home to over 2,000 religious buildings, it remains of the best preserved cities in Japan today."



For more details on cruise options and turnarounds in Japan, send your enquiry to alvin@cruise-asia.com



Exceptional Excursions



Ibusuki sand bath experience & Chiran peace museum

A spectacular excursion that covers two intriguing regions, Ibusuki and Chiran. Ibusuki is located on the southeast tip of the Satsuma Peninsula and is a famous resort area in Kyushu. Here guests have the opportunity to lay in warm sand pits where they are gradually covered with volcanic sand up to their necks. The weight and heat of the sand assists in the body's blood circulation, and after about 10 minutes, the whole body begins to perspire and relax. Following a hot sand and spring bath, we visit Satsuma Denshokan Museum where a large collection of Satsuma Pottery is on display. Sampling traditional Japanese cuisine is a must so we dine on a delicious Kaiseki meal.

This decorative and very delicate Japanese cuisine is hand-prepared in a private room at a local restaurant. Following this we head south to Chiran Peace Museum, also known as the Kamikaze Pilot Museum.

Rickshaw ride in Arashiyama & kaiseki lunch with geisha

A program that delves into the cultural depths and hidden traditions of Japan. Arashiyama is a pleasant district in the western outskirts of Kyoto and steeped in a fascinating cultural heritage dating back to the 700s. We travel through the heart of Arashiyama by rickshaw to visit the UNESCO Zen temple of Tenryuji. Ranked among Kyoto's five great Zen temples, Tenryuji is the largest and most impressive temple in Arashiyama, founded in 1339 at the beginning of the Muromachi Period. To understand the culture beyond the visible, we next try Zen Meditation. Led by a monk serving the temple, we enter a private Zen room where guests can learn the basics of meditation that led the Buddha to enlightenment. After our insightful experience, we sit down to a 'Kaiseki Ryori' lunch in a traditional themed restaurant where geisha await your arrival.



The historic sights of Matsuyama

From Matsuyama Port it is a short drive to the mighty Matsuyama Castle. A three-wing, three-story castle constructed by famous samurai Yoshiaki Kato in 1603. The castle affords not only a magnificent view of Matsuyama but also of the Ishizuchi Mountain range and the Inland Sea of Japan. The Dogo Onsen Honkan has a three-story, castle-like structure and is the first bathhouse in Japan to be designated an important cultural property. The tour then winds its way to Dogo Shopping Arcade before taking clients back to the port.

Dogo Shopping Arcade is a bustling shop-lined street, including souvenir shops and restaurants where you can enjoy shopping or taste delicious Japanese sweets.





CURRENT PORTS IN HONG KONG	
Kowloon	
01.	Ocean Terminal
02.	Kai Tak

Hong Kong presents one of Asia's most instantly recognizable, and unforgettable skylines for passengers as they cruise into the ports of Ocean Terminal and Kai Tak in Kowloon. The glistening panels of glass and steel reflect a buzzing city, nestled between the harbour waters and vividly green mountains. Everything one could wish for is found literally within steps of the harbour – from exceptional shopping opportunities to bustling markets, remote fishing villages and adventurous activities such as sea canoeing or mountain hiking.

The former Crown Colony has plenty to keep visitors entertained with iconic attractions such as The Peak a must-visit, boasting jaw-dropping views across this spectacular territory. On neighboring Lantau Island it is still possible to discover ancient monasteries and villages such as Tai O, home to the Tanka people, a community of fisher folk who have occupied houses built on stilts above the tidal flats of Lantau Island for generations.



"Within steps you can move from a bustling city and into a rugged countryside landscape in a land of dazzling diversity that never fails to surprise or impress."



For more details on cruise options and turnarounds in Hong Kong, send your enquiry to alvin@cruise-asia.com



INDONESIA



CURRENT PORTS IN INDONESIA

- | | | | |
|-----------------------------------|---|-------------------------------------|--|
| 01. BKS port, Sabang - Pulau Weh | 14. Kura Kura, Karimun Jawa | 23. Badas, Badas, Sumbawa | 36. Loh Liang Pier, Pink Beach (Komodo) |
| 02. Sinabang, Simelu | 15. Tanjung Perak, Surabaya | 24. Kenanga Beach, Kenanga, Sumbawa | 37. Soekarno Hatta, Ujung Padang, Sulawesi |
| 03. Belawan, Belawan | 16. Tanjung Tembaga, Probolinggo | 25. Wera Beach, Wara, Sumbawa | 38. Pare Pare, Pare Pare, Sulawesi |
| 04. Teluk Dalam, Nias | 17. Banjarmasin, Banjarmasin | 26. Pero Beach, Kodi, West Sumba | 39. Tanjung Ringgit, Palopo, Sulawesi |
| 05. Muara Siberut, Siberut Island | 18. Bali | 27. Waingapu, Waingapu, Sumba | 40. Toli Toli, Toli Toli |
| 06. Teluk Bayur, Padang | • Benoa | 28. Bodo Beach, Savu | 41. Bitung, Manado |
| 07. Baai, Bengkulu | • Celukan Bawang | 29. Tenau, Kupang, West Timor | 42. Ternate, Ternate |
| 08. Sekupang, Sekupang, Batam | 19. Kumai, South Kalimantan for Orangutan | 30. Dili, Dili - East Timor | 43. Raja Ampat, Raja Empat-Gam Island |
| 09. Tanjung Binga, Belitung | 20. Semayang, Balikpapan | 31. Alor, Alor | 44. Ambon, Ambon |
| 10. Krakatau, Krakatau | 21. Bontang, Balikpapan | 32. Loren Say, Maumere | 45. Banda Neira, Banda Neira |
| 11. Tanjung Priok, Jakarta | 22. Lombok | 33. Ende, Ende (Flores) | 46. Kokas, Kokas, Fak Fak |
| 12. Cirebon, Cirebon | • Lembar | 34. Larantuka, Larantuka, Flores | 47. Agats Village, Agats, Irian Jaya |
| 13. Tanjung Emas, Semarang | • Nara Bay | 35. Rinca, Rinca, Komodo | 48. Jayapura, Jayapura |

Where to start with cruises when you are faced with a country comprised of over 17,000 islands? Indonesia's tropical archipelago splayed out across the equator has a long and established sea-faring history, and today presents not only an extensive list of ports, but also some of the world's most spectacular attractions. Bali presents a land of colour and jovial traditions, it embodies enjoyment from its lucid waters to the cliff top temples. The island caters to literally every kind of traveler, with a wealth of attractions that include excellent snorkeling and luxurious spa retreats.

The port of Tanjung Emas at Semarang on the island of Java enables passengers to explore Borobudur Temple, the largest Buddhist monument in the world and a UNESCO World Heritage Site. Komodo Island is also an extremely popular destination, where guests can come face-to-face with the mighty komodo dragon.



"Bali's Neighboring islands of Flores and Lombok islands can be easily explored on smaller vessels, revealing charming villages, stunning isolated mountain sceneries and traditional local communities."



For more details on cruise options and turnarounds in Indonesia, send your enquiry to alvin@cruise-asia.com



Exceptional Excursions



Temples, palaces & craft villages

Passengers begin their overland voyage to a local market where they explore two of the island's major sites - the 18th century Lingsar Temple and Majura Water Palace. Founded in 1714, the temple is a famous Hindu shrine that draws Buddhist and Muslim worshippers from far and wide. The Temple's sacred pool is home to eels that feed on hard-boiled eggs thrown to them by worshippers – keep your eyes open and you may see them swirling around on the surface.

The Majura Water Palace is an 18th century floating pavilion (Balinese "bale kembang") that sits on an artificial lake and was completed in 1744. We also discover everyday Lombok life at the colorful Sesele Market where locals haggle for fresh fish, meats, fruit and produce. Before departing we visit Sukarare Craft Village to watch weavers at work.

Authentic Balinese remains

Our program kicks off with a visit to Kerthagosa at kelungkung Regency Town - a building designed and built in 1710 by the country's leading artisans. The compound contains the beautiful Bale Kambang (floating pavilion) and the Kertagosa (Royal Court of Justice), complete with elaborate ceiling murals. The day continues with a sumptuous buffet lunch served at Mahagiri Restaurant while overlooking stunning rice terraces. We then visit the 13th century Pura Kehen. Here visitors step through the 'Kori Agung' (stone capped gateway) and marvel at the magnificent elephant sculptures.

Then proceed to Penglipuran Balinese village where life has barely changed in more than a century. Our last stop is at Tohpati, a center for Balinese hand weaving and handmade batik prints. Here guests can browse the batik gallery for souvenirs, gifts and fine Balinese crafts.



Borobudur & steam train ride

This excursion includes a visit to the Ambarawa antique train museum, a tour of the colonial-era locomotives and a steam train journey to the mountain town of Bedono close to Borobudur. Borobudur stands unique among other Buddhist temples, and its creation without the use of modern engineering and technology remains a mystery. For more than 1,000 years it lay hidden under dense jungle vegetation following its creation around the year 850. Rediscovered in 1814 by Sir Stamford Raffles, the temple site was cleared of growth and the process of restoring the two million pieces of andesite stone begun.

The view from the top is beautiful and will remain with guests as one of the most spectacular sights of any visit to Southeast Asia. Afterwards we enjoy a tasty Javanese buffet lunch served adjacent to the temple that includes Javanese coffee, tea and local refreshments.



"A vast archipelago rich in natural biodiversity that captivates passengers through compelling cultural traditions. The scattered islands possess a unique geography, diverse flora and fauna, and intriguing history that excite equally from the deck of a ship or on foot."

The Lion City exudes a pioneering multi-cultural heritage amid a dazzling display of economic achievement and enterprise. Founded as a British trading colony, the island now galvanizes cruise visitors through a skyline of ultra-modern architecture, impeccable service, iconic attractions and pockets of ethnic communities who have retained their colorful cultural traditions. Its location at the tip of the Malay Peninsula has led it to be, historically, the single most important port in Asia.

Those arriving at either of its ports can easily access the wealth of attractions that present themselves. The ethnic heritage districts of Chinatown, Little India and Arab Street along with the colonial Civic District are great places for visitors to experience the delightful contrasts of tradition. While the jaw-dropping, iconic encounters and sights around Marina Bay such as the Gardens by the Bay and the monolithic Marina Bay Sands Hotel are never forgotten.



- CURRENT PORTS IN SINGAPORE**
- Singapore
 - 01. Singapore Cruise Center
 - 02. Marina Bay Cruise Centre



"Connected to the mainland by a monorail, Sentosa Island includes, among its extensive list of attractions, a two kilometer sheltered beach, skywalk and the Universal Studios Singapore."



For more details on cruise options and turnarounds in Singapore, send your enquiry to alvin@cruise-asia.com



CURRENT PORTS IN CAMBODIA

01. Sihanoukville Port, Sihanoukville

Sihanoukville on Cambodia's southern coast was developed as the country's only deepwater port and is rapidly growing in popularity as more passengers arrive. Here visitors can appreciate charming towns such as Kampot and Kep, easily accessible on day excursions, and the tropical mangrove forests of Ream National Park. The islands of Koh Rong and Koh Kong also present luxurious escapes. Koh Rong is surrounded by a reef system of up to 10 meters in depth with excellent visibility for those wanting to dive.

Head inland and the capital Phnom Penh can be reached within a few hours' drive. Here visitors can explore an astounding cultural heritage that fuses the exotic with historic, while effortlessly weaving an alluring café culture and luxurious elements into its modern-day society. Further afield, Siem Reap embraces the magnificent Angkor Wat Temple – the largest existing religious monument in the world and the national symbol of Cambodia.



"Cambodia is a riveting destination that perfectly muddles modernization with astounding natural environments, complemented by welcoming and attentive Cambodian people."

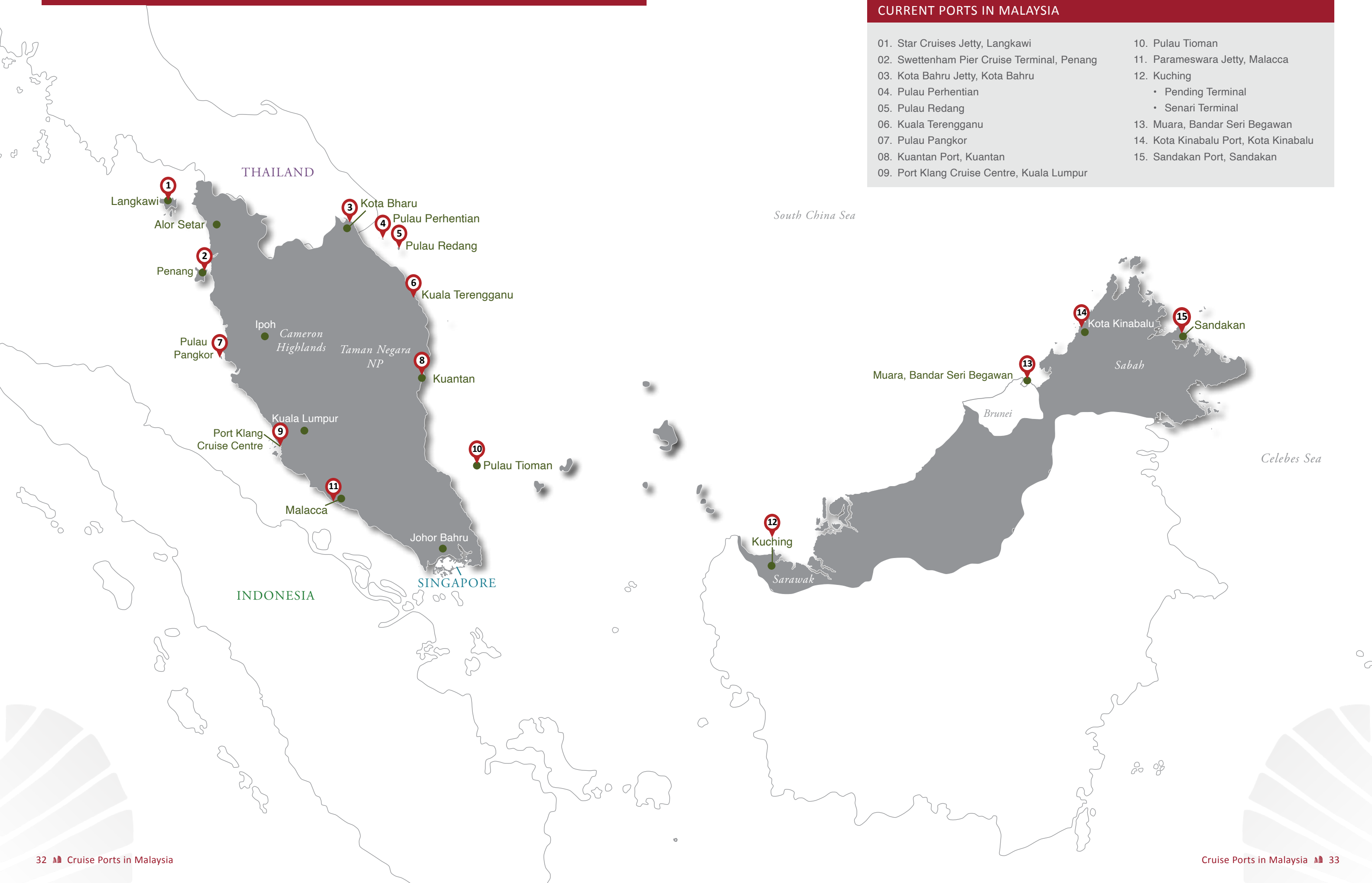


For more details on cruise options and turnarounds in Cambodia, send your enquiry to alvin@cruise-asia.com



CURRENT PORTS IN MALAYSIA

- | | |
|---|---------------------------------------|
| 01. Star Cruises Jetty, Langkawi | 10. Pulau Tioman |
| 02. Swettenham Pier Cruise Terminal, Penang | 11. Parameswara Jetty, Malacca |
| 03. Kota Bahru Jetty, Kota Bahru | 12. Kuching |
| 04. Pulau Perhentian | • Pending Terminal |
| 05. Pulau Redang | • Senari Terminal |
| 06. Kuala Terengganu | 13. Muara, Bandar Seri Begawan |
| 07. Pulau Pangkor | 14. Kota Kinabalu Port, Kota Kinabalu |
| 08. Kuantan Port, Kuantan | 15. Sandakan Port, Sandakan |
| 09. Port Klang Cruise Centre, Kuala Lumpur | |



Geographically divided between Peninsular Malaysia and Borneo, passengers embarking on overland excursions are treated to astounding wildlife encounters and exceptional cultural diversity, reflected in period architecture and a lively atmosphere. Peninsular Malaysia is home to no less than eleven ports and allows visitors to step into the heart of its cultural highlights in George Town, Penang.

Penang absorbs the traveler's attention with a patchwork of cultures, colonial remnants and a truly fascinating heritage. The ports of Port Klang, Langkawi and Penang provide exceptional short-cruise options, each with their own distinct attractions. Further south, the capital of Kuala Lumpur symbolizes the country's pioneering spirit with iconic establishments such as the Petronas Towers ascending 170 meters into the sky, dazzling by day or night. Cross the sea and Borneo presents a world of hidden cultures, a dazzling array of wildlife, intriguing tribes and sublime terrain to immerse in.



"A country that is essentially two different destinations, Malaysia is served by 15 well-spaced operational ports. Four of these are found in Borneo, providing access to some of the region's most diverse wildlife and timeless traditions."



For more details on cruise options and turnarounds in Malaysia, send your enquiry to alvin@cruise-asia.com



Exceptional Excursions



Borneo traditional living

On this excursion guests visit the Mari Mari Cultural Village where the compelling cultural diversity of Sabah is on display. Set within a tropical fruit orchard and graced with a babbling brook that flows through the middle, the Mari Mari Cultural Village takes you on a journey back in time to the days of the legendary headhunters and other indigenous people of Borneo. The village reveals the various home-types of the multitude ethnicities found in Sabah. Each home was built by descendants of the tribes they represent and offer a truly genuine cultural encounter.

Within the village, demonstration huts divulge techniques such as the making of a blowpipe, starting a fire from the Polod tree and traditional tattooing. There are also stalls offering Sabah delicacies where guests can taste herbal drinks, rice wine and learn how to cook local delicacies.

Mah Meri experience

On arrival at the Mah Meri Village, guests are crowned with a traditional head dress and offered a refreshing coconut drink before attending an informative briefing regarding the Mah Meri people. We then depart on an insightful tour led by a well-informed guide that finishes with a Q&A session and tree planting. As the wedding rituals in this region are of particular note, there is an opportunity for guests to become a bride and groom as they change into traditional attire and take part in a traditional Mah Meri Mask Dance or Mayin Joh-Oh.

These ancient dances are performed to spiritually invite the Muyang (ancestor spirits) to attend. These ritualistic performances are performed during Ari'Muyang (Ancestor Day celebrations), weddings and other joyous occasions.



Langkawi mangroves explorer

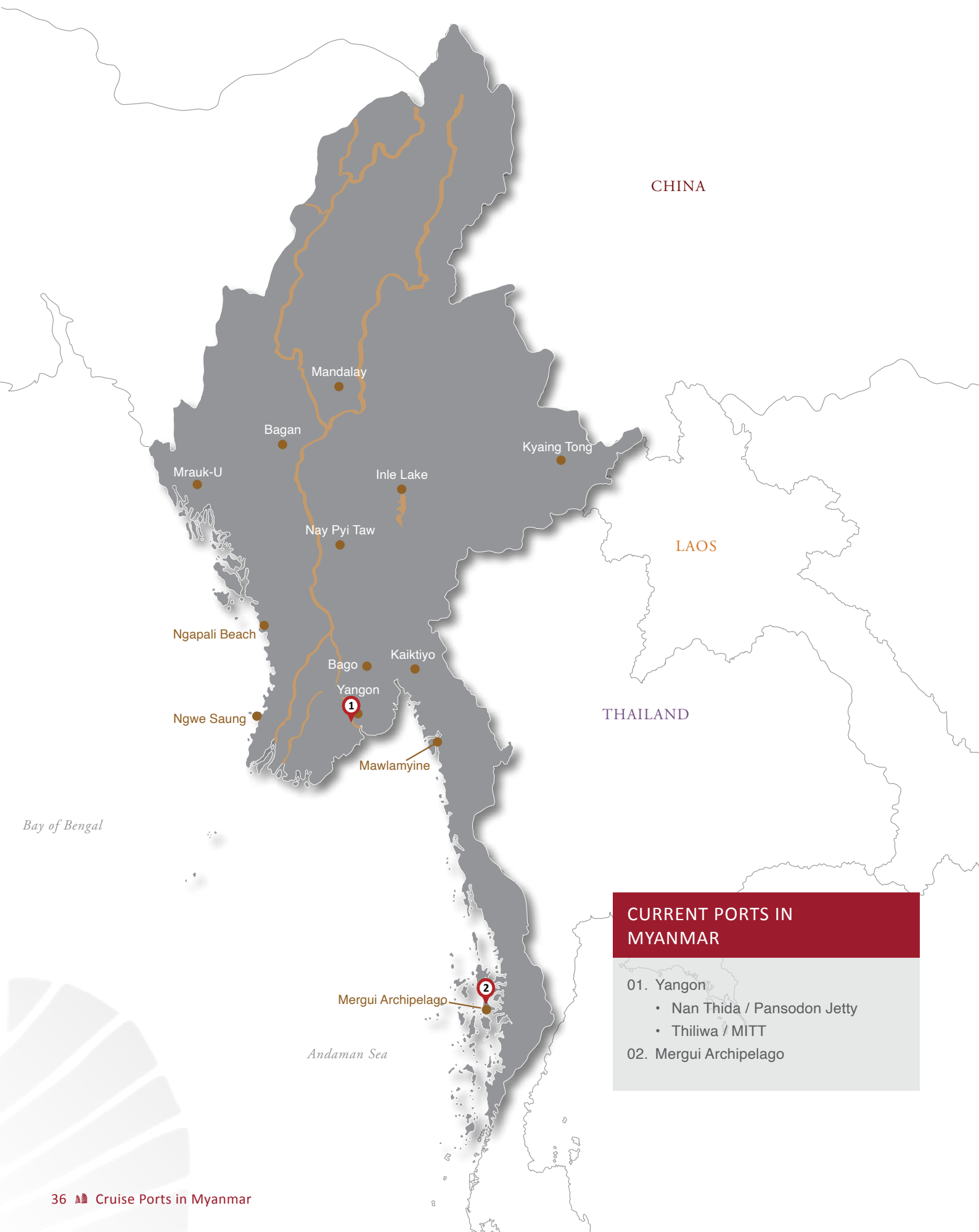
Set in a craggy, almost magical setting of limestone outcrops rising sharply out of the calm Andaman Sea, the Kilim mangrove forest in Langkawi is an intricate network of streams and hidden coves that are home to hundreds of endemic wildlife species.

Mangrove swamps are Langkawi's natural defense system that acts as natural shields against strong waves. Among the most exciting of these are the brahminy kites (also known as red-backed sea-eagle) that nest in the overhead escarpments.

One of the best ways to discover this usually inaccessible mangrove world is to join a small boat excursion when an expert guide will throw food into the water, enticing these huge birds to swoop down and pick up the offerings with their curling talons. A further stop at a floating fish farm allows visitors to feed the tame stingrays found here.



"Malaysia is an established destination that presents passengers with a diverse cultural heritage, compelling cultural traditions and stunning natural scenery."



CURRENT PORTS IN MYANMAR

01. Yangon

- Nan Thida / Pansodon Jetty
- Thiliwa / MITT

02. Mergui Archipelago

Myanmar's years of isolation has preserved its extensive coastline, keeping it void of the modern day trappings that attach themselves to the popular classic beach destinations. Many visitors will dock at Yangon, Myanmar's financial center and the largest city in the country. Characterized by stunning colonial buildings, large open parks and lakes and a fascinating ancient culture, a journey through the city is akin to taking a step back into the days of yesteryear. Overnight tour options also present themselves with the temple strewn Mon region of Bago just a few hours' drive and flights to Mandalay and Bagan allowing visitors to discover its regal past.

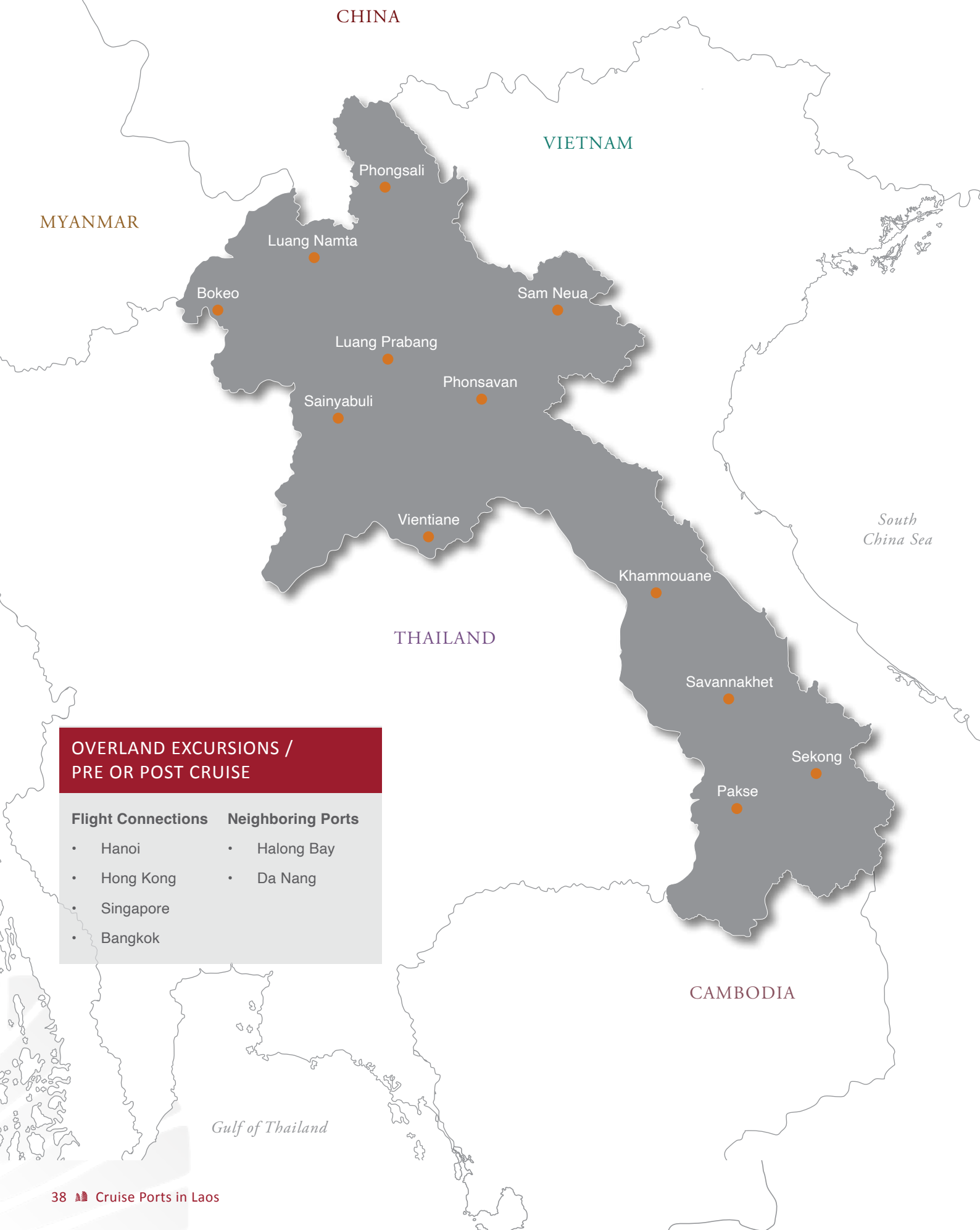
The Mergui Archipelago is Myanmar's glistening cruise gem – an area located in the southernmost part of Myanmar and comprising over 800 beautiful islands. Due to its lack of media attention, the islands and surrounding seas are alive with an amazing diversity of flora and fauna. Many travelers are yet to realize Myanmar has some of the most beautiful beaches and islands in all of Asia.



"The largest country in mainland Southeast Asia, Myanmar presents a magnificent coastline with the Mergui Archipelago situated on the southernmost tip – remaining one of the world's great hidden tourism destinations."



For more details on cruise options and turnarounds in Myanmar, send your enquiry to alvin@cruise-asia.com



OVERLAND EXCURSIONS / PRE OR POST CRUISE

Flight Connections	Neighboring Ports
<ul style="list-style-type: none"> Hanoi Hong Kong Singapore Bangkok 	<ul style="list-style-type: none"> Halong Bay Da Nang

Laos is nestled in the heart of Indochina and exemplifies the charming traits of the Southeast Asia peninsula better than anywhere. Easily accessed by air from Hanoi, Ho Chi Minh City and Danang in Vietnam; Siem Reap and Phnom Penh in Cambodia; or from Thailand along the Mekong River, it provides great insight into many cultural traditions that have been lost in other areas of Asia. The Mekong River surges through Laos, from the extreme north in Phou Den Din National Bio-diversity Conservation Area, through Vang Vieng and the peaceful capital of Vientiane, all the way down to the 4000 Islands on the Cambodian border. While there is no sea port, the variety and opportunity for river cruises is outstanding.

Following the course of the Mekong passengers can explore Luang Prabang, a UNESCO World Heritage Site dispersed with many historical temples and colonial-style buildings, surrounded by lush, green mountains. In the south, the 4000 Islands provides the chance to interact with locals who live solely on some of the vast islands found here.



"Ancient traditions are well preserved and the pace of life is very laid-back, allowing visitors to unwind amongst some of Asia's most resplendent landscapes."



For more details on cruise options and turnarounds in Laos, send your enquiry to alvin@cruise-asia.com



“At Destination Asia we are working to make it easier to travel sustainably.”

What is responsible travel? In its simplest form sustainable travel is being socially and culturally aware when you travel, and understanding the impact your visit will have on a destination. By being more aware, we can minimize negative impacts and maximize the positive for not only those who live in the places we visit, but also ourselves through richer experiences. At Destination Asia we believe that every experience should be conducted in the most socially responsible and holistically sustainable way possible. We have taken great steps in the past year and strive to conduct our business in a socially responsible and ethical manner - in a way that is good for the communities in which we work, the environment, people and our business. Therefore any activity we undertake endeavors to tread lightly on the planet; empowering travelers and local communities to leave a positive impact on the surrounding environments in which they visit or live.

Our commitment to sustainability management and consistent sustainable business practices is underlined through our involvement with the Travelife Sustainability in Tourism Scheme. Travelife is the travel industry's leading international sustainability certification. Destination Asia joined the Travelife Sustainability in Tourism Scheme as a member to steer its practices along a more responsible path.

Our Mission

Our aim is to contribute to a sustainable society and to sustainable tourism. Any activity we undertake endeavors to tread lightly on the planet; empowering travelers and local communities to leave a positive impact on the surrounding environments in which they visit or live. We will always strive to manage our resources so economic and social needs can be fulfilled while maintaining cultural integrity and biological diversity – therefore preserving the elements that make our destinations such desirable places to visit. We also work closely with our suppliers to deliver higher sustainability standards and motivate them towards more sustainable travel behavior.

Destination Asia sustainability policy

Destination Asia operates in 11 countries across Asia with 29 locally owned operational offices across these destinations. We strive to run our business along ethical lines, embracing the three pillars of sustainability: economic, social and environmental. We endeavor to maximize the positive benefits received by local communities as a result of our presence, while minimizing any negative impacts. Whenever possible, we will work with local partners and suppliers who share our philosophy and actively monitor their business practices and services.

Sustainable excursion policy

We ensure that all preferred excursion suppliers are aware of our sustainability objectives and encourage them to adopt a responsible approach. Each supplier is made aware of our sustainability policy and we are developing relevant codes of conduct for sensitive excursions. All excursion suppliers must commit to respect basic human rights and fight against child exploitation. We are committed to ensuring that our suppliers understand the importance of taking sustainability issues seriously. Excursion providers are required to evaluate how ethical and responsible their services are and train their guides accordingly. Protecting biodiversity and wildlife at each destination is also a key priority.



Marketing messages and product information

Destination Asia will never promise more than it can deliver or provide a false impression of the destinations in which it works. We take full responsibility for our actions and strive to create a positive impact through our activities on the environment, customers, employees and communities.

At all times we monitor and ensure active compliance with the spirit of the law, ethical standards and international values. We communicate relevant sustainability issues to our clients in the destinations they visit and provide options for those who wish to donate or give back. An extensive list of products and destination information is accessible online for guests to access. We also provide customers with full support during their journey with Destination Asia and have guidelines in place in the case of emergency situations.

Read our full Sustainability Policy online at: www.destination-asia.com



OUR CORPORATE SOCIAL RESPONSIBILITY

Our Promise

Embracing our CSR pillars we take responsibility for our actions and strive to create a positive impact through our activities on the environment, consumers, employees and communities. At all times we monitor and ensure active compliance with the spirit of the law, ethical standards and international values. We manage the economic, social and environmental impacts of our operations to maximize the benefits and minimize the downsides.

Giving Back by Destination Asia

Giving Back is a socially responsible group-initiative created in 2011 by Destination Asia to connect people and make a positive impact in the destinations where we operate. Giving Back is the name under which Destination Asia operates each of its CSR projects within their 11 destinations. Every year, each country sets aside a budget of US\$5,000 specially to fund socially responsible projects. How these funds are distributed depends on the specifics of each project. A CSR representative within each country is assigned to work closely and connect the team with a selected local charity or enterprise, with the scope of projects in recent years varying greatly.

Giving Back leads this effort with innovative programs and partnerships by combining human collaboration and networked connections. Throughout Asia our employees continue to generously donate their talent, time, and compassion. They serve as volunteers in their communities or give to nonprofits, and Destination Asia embraces their enthusiasm to help change the world.



On Top Of Trends



The screenshot shows the Cruise Asia website with a navigation bar, a hero image of a man and a woman, and three columns of text: 'Who we are', 'What We Do', and 'News'. The footer includes 'Trade shows', 'Terms and conditions', and '© 2015 Cruise Asia, All Rights Reserved'.

At Cruise Asia by Destination Asia, we have developed a series of innovative and creative sales tools to support our clients. These range from our comprehensive profile that you are reading now, to the latest product news from around the region presented in our quarterly newsletter and a dedicated 'Agent Hub'. The newly launched Agent Hub provides a central point to access the latest product itineraries, key sales tools, training presentations and factsheets, country information and range of other beneficial travel products. We know how important it is to stay ahead of the competition, to stand out from the crowd and offer superior products that will really wow your clients.

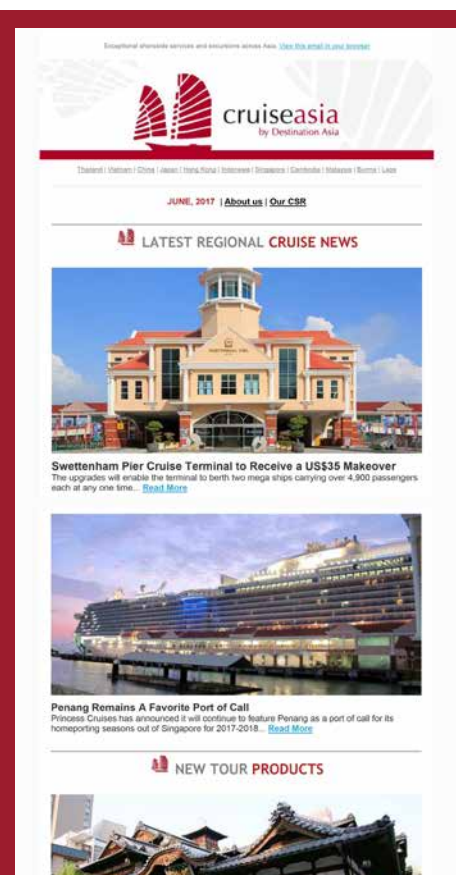
These marketing tools support our dedicated cruise website. A portal with the latest news from around the region and further details on each of our operating countries.

Request access to our Agent Hub by sending an email to: sales@destination-asia.com



Visit us at www.cruise-asia.com.

"We guarantee you will always have your finger on the pulse in one of the world's most dynamic regions for cruise."



The screenshot shows the Cruise Asia Quarterly newsletter with a header, a 'LATEST REGIONAL CRUISE NEWS' section featuring a photo of a cruise ship, and a 'NEW TOUR PRODUCTS' section featuring a photo of a traditional building.

Cruise Asia Quarterly

Our Cruise Asia quarterly newsletter keeps every one of our clients up to date with the latest developments taking place in cruise around Asia. We cover regional news, feature our dedicated staff, detail recently developed products designed to captivate passengers and suggest overland extensions that reveal the inherent beauty of a destination.

As we attend multiple cruise events throughout the year, our newsletter is also the place to discover where we can next meet – and let you know how we got on at previous shows. If you would like to join our mailing list, send a request to sales@destination-asia.com.

Exceptional shoreside services and excursions across Asia



Unique experiences

Cruise Asia by Destination Asia excel at forging unique experiences that connect travelers to the authentic cultures and wonders of Asia, through services that have been refined since opening in 1996. Our network of offices in 11 countries across Asia is backed by specialist local knowledge and a unique collection of key contacts. These assist us in providing unforgettable experiences that take clients beyond the normal 'off the shelf' itineraries.

Our personalized tailormade excursions and itineraries enable passengers to interact with locals and gain unforgettable memories of their time spent in Asia. Such encounters might include; a night-time tour of Bangkok's market and temples in a local tuk tuk; exploring Mount Bromo from its foot to the crater's edge; or connecting with the distinctive culture of Japan, visiting some of its most resplendent temples and learning the art of the tea ceremony.

Local management

We take great pride in always providing exceptional shoreside services and excursions in the market of each destination, never compromising on standards. A local management philosophy allows us to focus on the intricate details that collectively, form each operation. Following this process, we are able to offer peace of mind to our clients and the most enlightening and memorable experiences for your passengers.

Each of our operating countries are managed by international travel experts, who are then supported by the best local creative talent, all of whom have deep-rooted connections within the community they live and work. It is this long standing relationship with the destinations that sets us apart from our competitors, our extensive list of close contacts throughout each country has been built over the past 20 years of business in Asia.



Asia-wide network

Our own standards of excellence ensure clients are always satisfied with their travel experiences while in Asia, and owing to our local management philosophy, we are able to guarantee the same high service levels across each of our 11 destinations. Cruise Asia by Destination Asia is the industry leader when it comes to providing outstanding shoreside services and excursions in Asia. No matter the port, our specialist teams will guarantee the finest reception for passengers while ensuring impeccable time management.

Our company values have always been simple, to provide on-site services that are the very best available in the market in each destination, while never compromising on service standards – and delivering a level of service that exceeds our client expectations.



"Cruise Asia by Destination Asia is the region's most professional cruise line service provider that operates to the industry's highest standards, providing a range of key services throughout our 11 country network."



Exceptional shoreside services
and excursions across Asia

www.cruise-asia.com